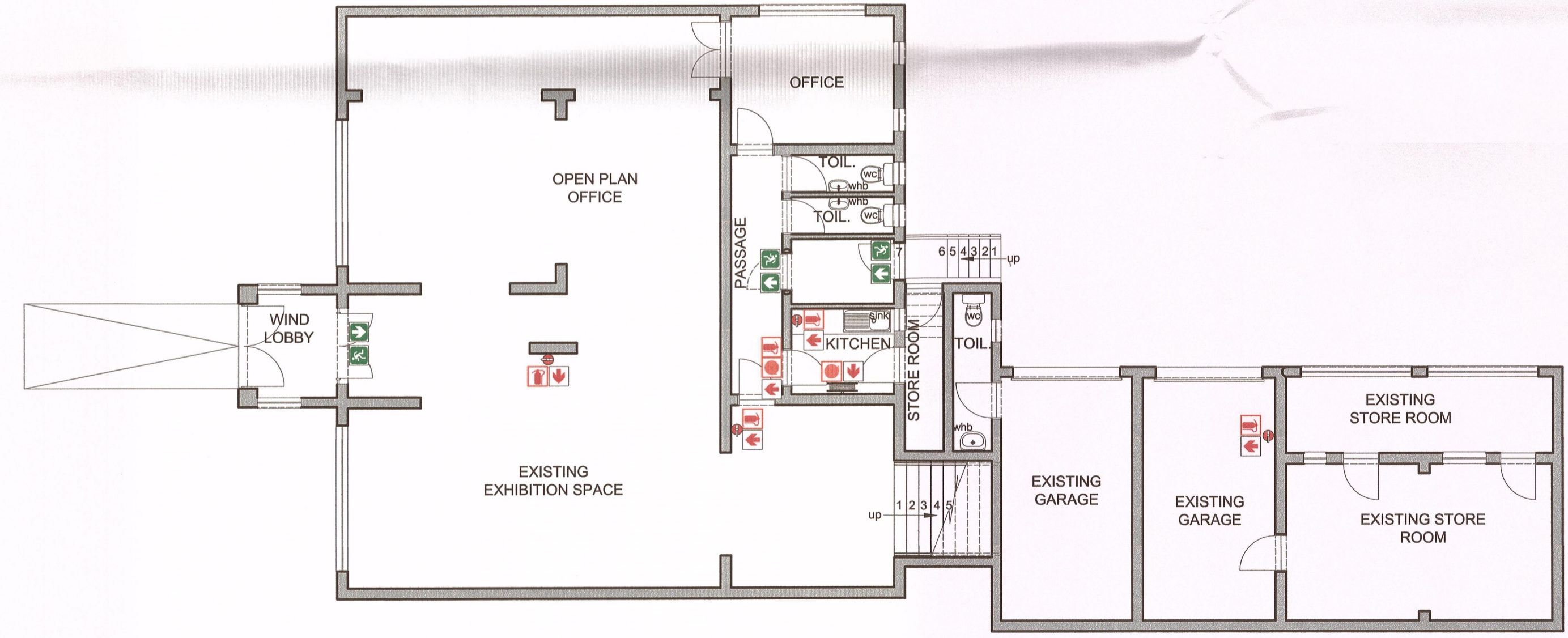


- FIRE LEGEND**
- 290x290mm photoluminescent fire extinguisher sign complete with aluminium frame fixed to wall with bottom of sign to line up with top of door unless otherwise specified on plan
 - 290x290mm photoluminescent fire fighting equipment directional sign complete with aluminium frame fixed to wall with bottom of sign to line up with top of door unless otherwise specified on plan
 - 290x290mm photoluminescent fire hose reel sign complete with aluminium frame fixed to wall with bottom of sign to line up with top of door unless otherwise specified on plan
 - existing 30m fire hose reel
 - existing 4.5kg dpc fire extinguisher as indicated on plan
 - 290x290mm photoluminescent sign with white figure running on green background indicating direction of travel complete with aluminium frame fixed to wall with bottom of sign to line up with top of door unless otherwise specified on plan
 - 290x290mm photoluminescent sign with white directional arrow on green background indicating direction of travel complete with aluminium frame fixed to wall with bottom of sign to line up with top of door unless otherwise specified on plan
 - 290x290mm photoluminescent sign with white figure walking down stairs on green background indicating direction of travel complete with aluminium frame fixed to wall with bottom of sign to line up with top of door unless otherwise specified on plan

- GENERAL NOTES**
- ALL FIRE EQUIPMENT TO BE INSTALLED, MAINTAINED AND SERVICED AS PER SANS 1475-1 AND SANS 10105-1 STANDARDS
 - ALL SIGNAGE TO BE 290X290mm AND OF TYPE PHOTOLUMINESCENT.
 - ALL FIRE SIGNAGE TO HANG FROM CEILING ON CHROMED CHAINS AT A HEIGHT OF 2210mm MEASURED FROM THE FINISHED FLOOR LEVEL UNLESS SPECIFIED OTHERWISE ON PLAN
 - ALL SIGNAGE TO RECEIVE 1 x 50mm WIDE ALUMINIUM FRAME ALL AROUND.
 - EMERGENCY LIGHTING AND ACCESS CONTROL SYSTEMS TO BE CONNECTED TO SMOKE DETECTION SYSTEM
 - NB. ALL EMERGENCY LIGHTING, AND ACCESS CONTROL AREAS CONNECTED TO ALARM SYSTEMS TO BE DONE STRICTLY ACC. TO ELECTRICAL ENGINEERS DETAILS AND SPECIFICATIONS

FIRST STOREY FIRE PLAN
SCALE 1:100



GROUND STOREY FIRE PLAN
SCALE 1:100

WANGANEER MUNICIPALITY
ECONOMIC DEVELOPMENT AND PLANNING DIRECTORATE
LAND USE CONTROL SUBDIRECTORATE
Recommended for approval
Ntsiki M
Building Control Officer / Date
This application has been approved in terms of Section 7 1(a) of Act 103 of 1977 subject to the conditions in the attached letter of recommendation.
9/12/2018
GENERAL MANAGER: LAND USE CONTROL DATE
PLAN NO. 638/2008-2009

[Handwritten signature]

NOTES

All dimensions on the drawings must be verified against the existing site conditions before the commencement of any work.

Drawings may not be scaled.

The vertical dimensions of brickwork are based on multiple centre lines of 85mm and the contractor must set out brickwork accordingly.

The contractor is responsible for site inspections by the building inspectors of the local authorities.

Except where otherwise indicated all given levels are unfinished levels.

The copyright of this drawing vests in the architect unless otherwise indicated.

All work must be done according to the South African Bureau of Standards code of practice SANS 10400-2010.

No.	REVISION	DATE	APPROVED

ROODT ARCHITECTS EST 1952

ARCHITECTURE, URBAN DESIGN, URBAN PLANNING, INTERIOR DESIGN
ENVIRONMENTAL MANAGEMENT & HERITAGE CONSULTING

7 RAY CHAMPION AVENUE, LILYVALE, BLOEMFONTEIN, 9301
PO BOX 28278, DANHOPE, 9310
TEL: 051 406 2100, FAX: 051 406 2101
info@roodtarchitects.co.za, www.roodtarchitects.co.za

CLIENT: PAN CYPRIOT CC.

PROJECT: RECORD DRAWINGS OF ALL STRUCTURES ON ERF 174, PRES. REITZ STREET 111 WESTDENE, BLOEMFONTEIN

DRAWING: FIRE PLAN

DESIGN	DATE
N/A	
DRAWN	DATE
KG	25/01/2018
APPROVED	DATE
SCALE	ISSUED
1:100	12/W1/2018
DRAWING STATUS	DRAWING NO.
RECORD DRAWINGS	1074_1/W1/05