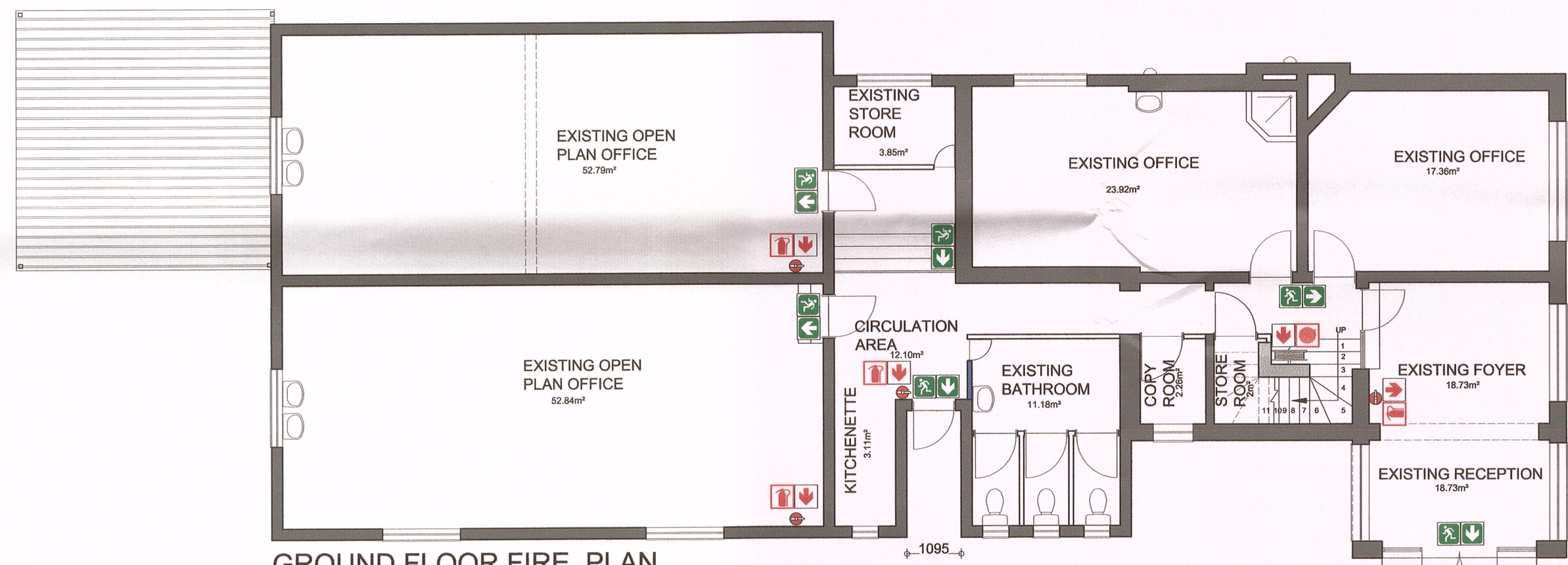


FIRST FLOOR FIRE PLAN  
SCALE 1:100



GROUND FLOOR FIRE PLAN  
SCALE 1:100

FIRE LEGEND

- 290x290mm photoluminescent fire extinguisher sign complete with aluminium frame fixed to wall with bottom of sign to line up with top of door unless otherwise specified on plan
- 290x290mm photoluminescent fire fighting equipment directional sign complete with aluminium frame fixed to wall with bottom of sign to line up with top of door unless otherwise specified on plan
- 290x290mm photoluminescent fire hose reel sign complete with aluminium frame fixed to wall with bottom of sign to line up with top of door unless otherwise specified on plan
- Existing 30m fire hose reel
- Existing 4.5kg dpc fire extinguisher as indicated on plan
- 290x290mm photoluminescent sign with white figure running on green background indicating direction of travel complete with aluminium frame fixed to wall with bottom of sign to line up with top of door unless otherwise specified on plan
- 290x290mm photoluminescent sign with white directional arrow on green background indicating direction of travel complete with aluminium frame fixed to wall with bottom of sign to line up with top of door unless otherwise specified on plan
- 290x290mm photoluminescent sign with white figure walking down stairs on green background indicating direction of travel complete with aluminium frame fixed to wall with bottom of sign to line up with top of door unless otherwise specified on plan

GENERAL NOTES

ALL FIRE EQUIPMENT TO BE INSTALLED, MAINTAINED AND SERVICED AS PER SANS 1475-1 AND SANS 10105-1 STANDARDS

ALL SIGNAGE TO BE 290X290mm AND OF TYPE PHOTOLUMINESCENT.

ALL FIRE SIGNAGE TO HANG FROM CEILING ON CHROMED CHAINS AT A HEIGHT OF 2210mm MEASURED FROM THE FINISHED FLOOR LEVEL UNLESS SPECIFIED OTHERWISE ON PLAN

ALL SIGNAGE TO RECEIVE 1 x 50mm WIDE ALUMINIUM FRAME ALL AROUND.

EMERGENCY LIGHTING AND ACCESS CONTROL SYSTEMS TO BE CONNECTED TO SMOKE DETECTION SYSTEM

NB. ALL EMERGENCY LIGHTING, AND ACCESS CONTROL AREAS CONNECTED TO ALARM SYSTEMS TO BE DONE STRICTLY ACC. TO ELECTRICAL ENGINEERS DETAILS AND SPECIFICATIONS

MANGAUNG METRO MUNICIPALITY  
ECONOMIC DEVELOPMENT AND PLANNING DIRECTORATE  
LAND USE CONTROL SUBDIRECTORATE  
Recommended for approval  
Ntsiki Tshu  
Building Control Officer / Delegate  
This application has been approved in terms of Section 7(1)(a) of Act 103 of 1977, subject to the conditions in the attached letter of recommendation.  
31/02/2018  
GENERAL MANAGER: LAND USE CONTROL DATE  
PLAN NO. 94/2001-2002

NOTES

All dimensions on the drawings must be verified against the existing site conditions before the commencement of any work.

Drawings may not be scaled.

The vertical dimensions of brickwork are based on multiple centre lines of 85mm and the contractor must set out brickwork accordingly.

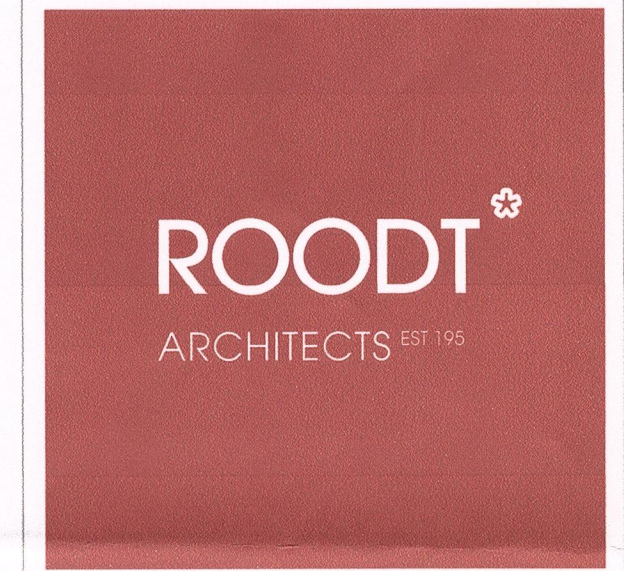
The contractor is responsible for site inspections by the building inspectors of the local authorities.

Except where otherwise indicated all given levels are unfinished levels.

The copyright of this drawing vests in the architect unless otherwise indicated.

All work must be done according to the South African Bureau of Standard's code of practice SANS 10400-2010.

No.	REVISION	DATE	APPROVED



ARCHITECTS EST 1952  
ARCHITECTURE, URBAN DESIGN, URBAN PLANNING, INTERIOR DESIGN  
ENVIRONMENTAL MANAGEMENT & HERITAGE CONSULTING  
7 RAY CHAMPION AVENUE, LILYVALE, BLOEMFONTEIN, 9301  
PO BOX 28278, DANHOF, 9310  
TEL: 051 408 2100, FAX: 051 408 2101  
info@roodtarchitects.co.za, www.roodtarchitects.co.za

PAN CYPRIOT CC. CLIENT

RECORD DRAWINGS FOR ALL BUILDINGS ON ERF 1/268, PRES. STEYN STREET 45, WESTDENE BLOEMFONTEIN PROJECT

FIRE PLANS

DESIGN	DATE
N/A	
DRAWN	DATE
KG	25/01/2018
APPROVED	DATE
SCALE	ISSUED
1:100	12/02/2018
DRAWING STATUS	DRAWING No
RECORD DRAWINGS	1074_3/W1/05