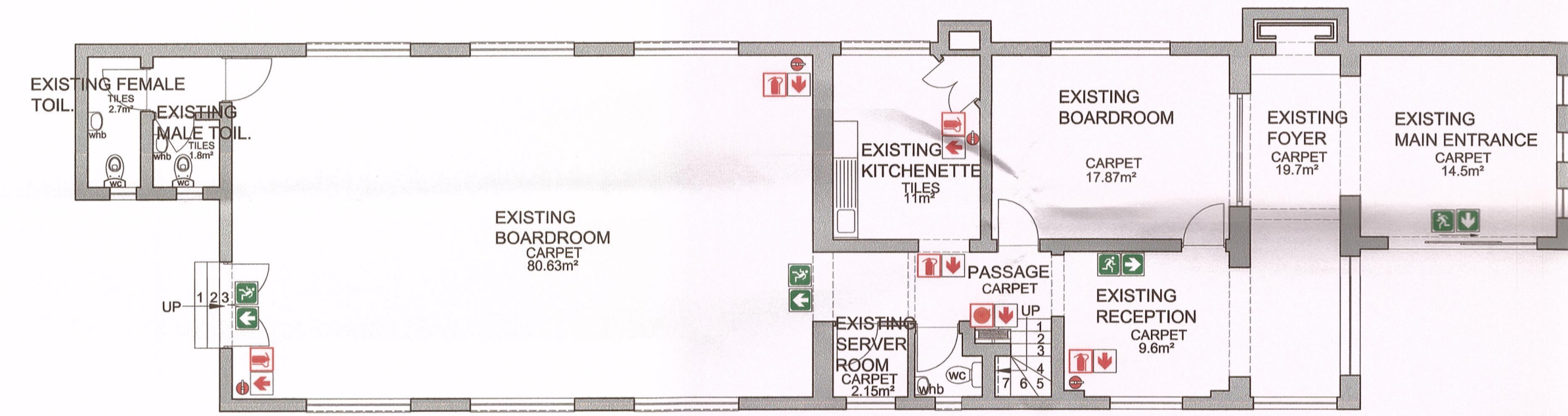


STRUCTURE A:
FIRST FLOOR PLAN
SCALE 1:100



STRUCTURE A:
GROUND FLOOR PLAN
SCALE 1:100

FIRE LEGEND

	290x290mm photoluminescent fire extinguisher sign complete with aluminium frame fixed to wall with bottom of sign to line up with top of door unless otherwise specified on plan		290x290mm photoluminescent sign with white figure running on green background indicating direction of travel complete with aluminium frame fixed to wall with bottom of sign to line up with top of door unless otherwise specified on plan
	290x290mm photoluminescent fire fighting equipment directional sign complete with aluminium frame fixed to wall with bottom of sign to line up with top of door unless otherwise specified on plan		290x290mm photoluminescent sign with white directional arrow on green background indicating direction of travel complete with aluminium frame fixed to wall with bottom of sign to line up with top of door unless otherwise specified on plan
	290x290mm photoluminescent fire hose reel sign complete with aluminium frame fixed to wall with bottom of sign to line up with top of door unless otherwise specified on plan		290x290mm photoluminescent sign with white figure walking down stairs on green background indicating direction of travel complete with aluminium frame fixed to wall with bottom of sign to line up with top of door unless otherwise specified on plan
	existing 30m fire hose reel		
	existing 4.5kg dpc fire extinguisher as indicated on plan		

GENERAL NOTES

ALL FIRE EQUIPMENT TO BE INSTALLED, MAINTAINED AND SERVICED AS PER SANS 1475-1 AND SANS 10105-1 STANDARDS

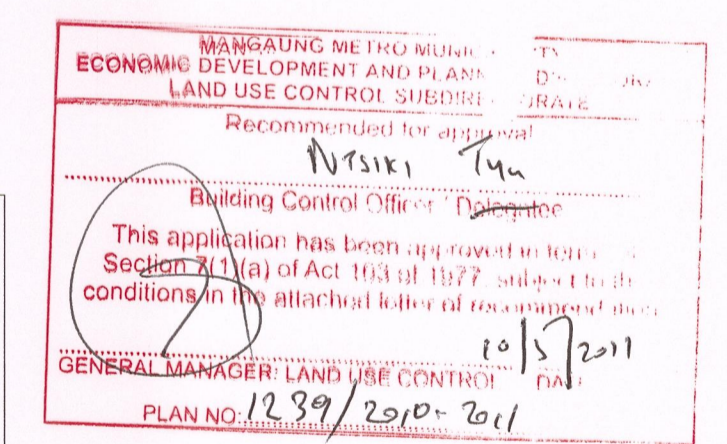
ALL SIGNAGE TO BE 290x290mm AND OF TYPE PHOTOLUMINESCENT.

ALL FIRE SIGNAGE TO HANG FROM CEILING ON CHROMED CHAINS AT A HEIGHT OF 2210mm MEASURED FROM THE FINISHED FLOOR LEVEL UNLESS SPECIFIED OTHERWISE ON PLAN

ALL SIGNAGE TO RECEIVE 1 x 50mm WIDE ALUMINIUM FRAME ALL AROUND.

EMERGENCY LIGHTING AND ACCESS CONTROL SYSTEMS TO BE CONNECTED TO SMOKE DETECTION SYSTEM

NB. ALL EMERGENCY LIGHTING, AND ACCESS CONTROL AREAS CONNECTED TO ALARM SYSTEMS TO BE DONE STRICTLY ACC. TO ELECTRICAL ENGINEERS DETAILS AND SPECIFICATIONS



NOTES

All dimensions on the drawings must be verified against the existing site conditions before the commencement of any work.

Drawings may not be scaled.

The vertical dimensions of brickwork are based on multiple centre lines of 65mm and the contractor must set out brickwork accordingly.

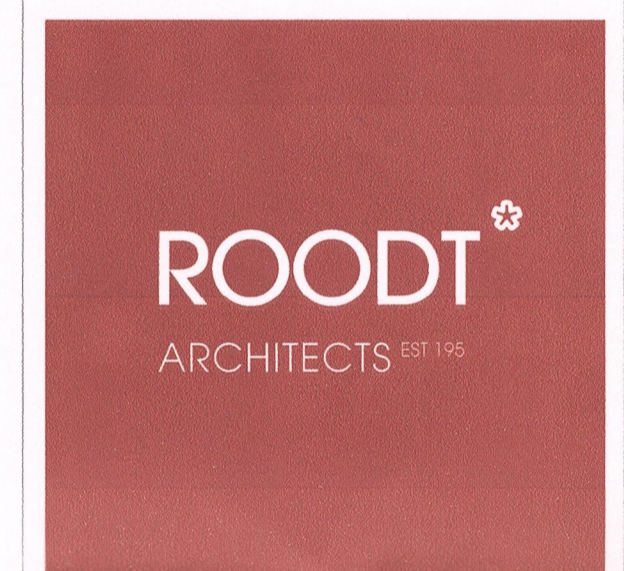
The contractor is responsible for site inspections by the building inspectors of the local authorities.

Except where otherwise indicated all given levels are unfinished levels.

The copyright of this drawing vests in the architect unless otherwise indicated.

All work must be done according to the South African Bureau of Standards code of practice SANS 10400-2010.

No.	REVISION	DATE	APPROVED



ARCHITECTS EST 1952
ARCHITECTURE, URBAN DESIGN, URBAN PLANNING, INTERIOR DESIGN
ENVIRONMENTAL MANAGEMENT & HERITAGE CONSULTING

7 RAY CHAMPION AVENUE, LILYVALE, BLOEMFONTEIN, 9301
PO BOX 28278, DANHOF, 9310
TEL: 051 408 2100, FAX: 051 408 2101
info@roodtarchitects.co.za, www.roodtarchitects.co.za

CLIENT

PAN CYPRIOT CC.

PROJECT

RECORD DRAWINGS OF ALL BUILDINGS ON ERF 267, PRES. STEYN STREET 47, WESTDENE BLOEMFONTEIN

DRAWING

FIRE PLANS

DESIGN	DATE
N/A	
DRAWN	DATE
KG	25/01/2018
APPROVED	DATE
SCALE	ISSUED
1:100	12/02/2018
DRAWING STATUS	DRAWING NO.
RECORD DRAWINGS	1074_4/W1/06