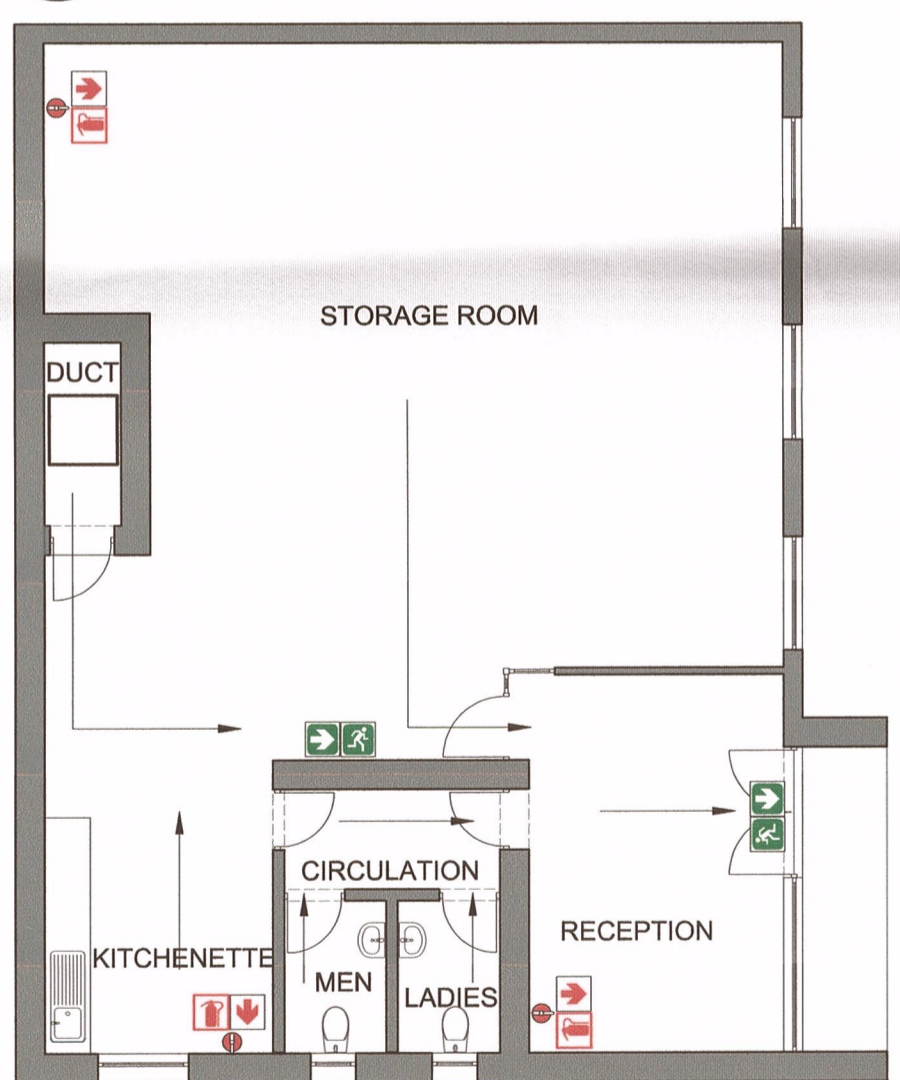
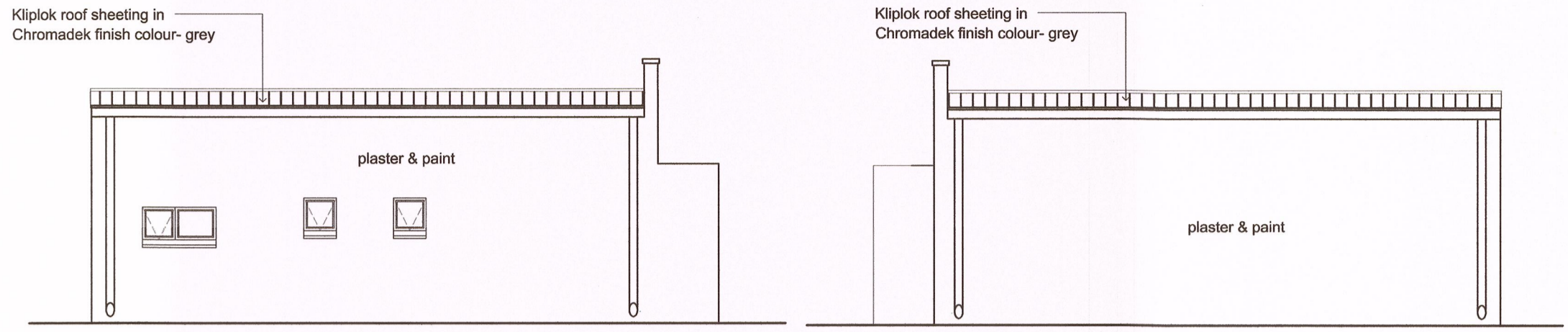


GROUND FLOOR PLAN  
SCALE 1:100



GROUND FLOOR PLAN - FIRE LAYOUT  
SCALE 1:100



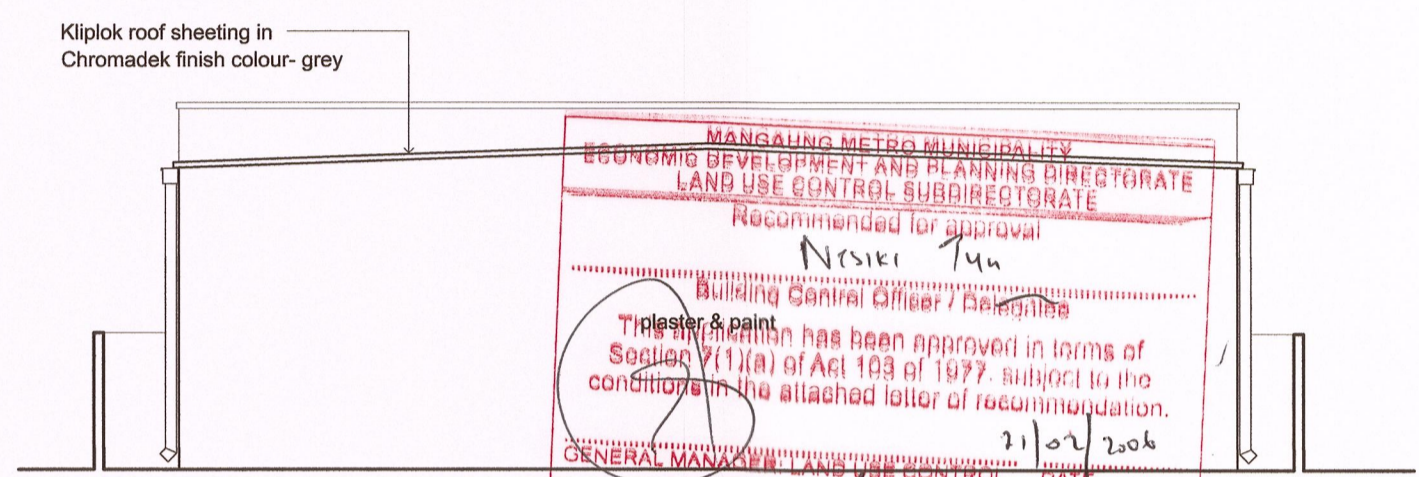
SOUTH EAST ELEVATION  
SCALE 1:100

NORTH WEST ELEVATION  
SCALE 1:100

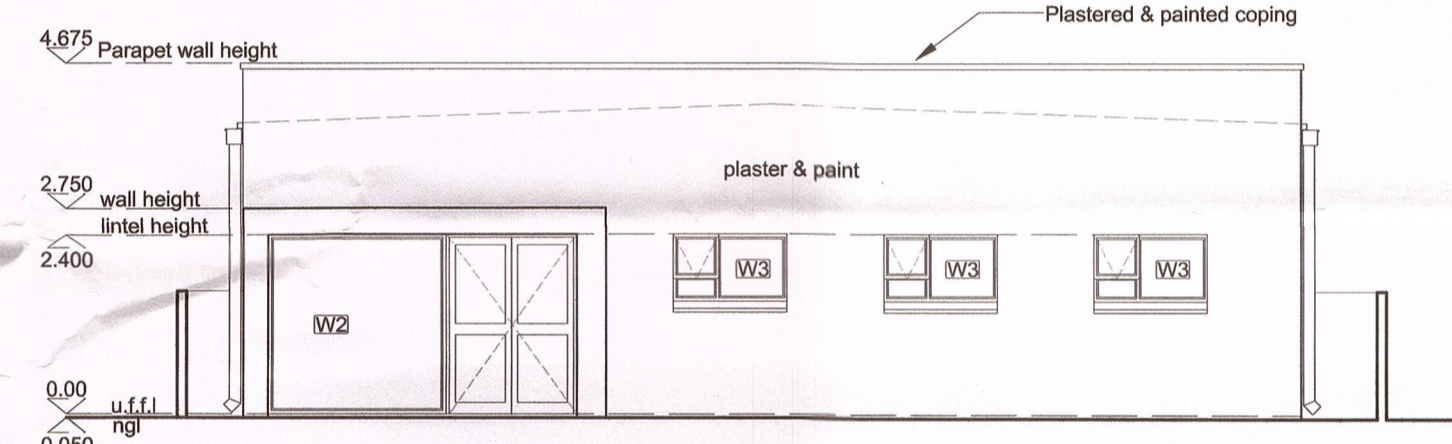
GROUND STOREY WINDOW SCHEDULE	
NUMBER ON PLAN	D1
QUANTITY	3
TYPE	standard steel single door door frame for internal wall
FINISH	frame = factory primer, 1x universal undercoat and 2x coats gloss enamel (white)
IRONMONGERY	Acc. to ironmongery specialist like Dorma or other similar approved
LINTEL	1 x concrete lintels over

GENERAL NOTES

- ALL FIRE EQUIPMENT TO BE INSTALLED, MAINTAINED AND SERVICED AS PER SANS 1475-1 AND SANS 10105-1 STANDARDS
- ALL SIGNAGE TO BE 290X290mm AND OF TYPE PHOTOLUMINESCENT.
- ALL FIRE SIGNAGE TO HANG FROM CEILING ON CHROMED CHAINS AT A HEIGHT OF 2210mm MEASURED FROM THE FINISHED FLOOR LEVEL UNLESS SPECIFIED OTHERWISE ON PLAN
- ALL SIGNAGE TO RECEIVE 1 x 50mm WIDE ALUMINIUM FRAME AL AROUND.
- EMERGENCY LIGHTING AND ACCESS CONTROL SYSTEMS TO BE CONNECTED TO SMOKE DETECTION SYSTEM
- NB. ALL EMERGENCY LIGHTING, AND ACCESS CONTROL AREAS CONNECTED TO ALARM SYSTEMS TO BE DONE STRICTLY ACC. TO ELECTRICAL ENGINEERS DETAILS AND SPECIFICATIONS**



SOUTH WEST ELEVATION  
SCALE 1:100



NORTH EAST ELEVATION  
SCALE 1:100

FIRE LEGEND

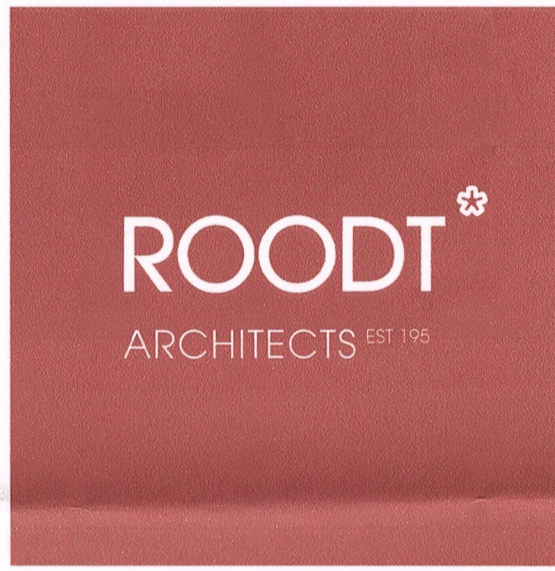
- 290x290mm photoluminescent fire extinguisher sign complete with aluminium frame fixed to wall with bottom of sign to line up with top of door unless otherwise specified on plan
- 290x290mm photoluminescent fire fighting equipment directional sign complete with aluminium frame fixed to wall with bottom of sign to line up with top of door unless otherwise specified on plan
- Existing 4.5kg dpc fire extinguisher as indicated on plan
- 290x290mm photoluminescent sign with white figure running on green background indicating direction of travel complete with aluminium frame fixed to wall with bottom of sign to line up with top of door unless otherwise specified on plan
- 290x290mm photoluminescent sign with white directional arrow on green background indicating direction of travel complete with aluminium frame fixed to wall with bottom of sign to line up with top of door unless otherwise specified on plan
- 290x290mm photoluminescent sign with white figure walking down stairs on green background indicating direction of travel complete with aluminium frame fixed to wall with bottom of sign to line up with top of door unless otherwise specified on plan

GROUND STOREY WINDOW SCHEDULE		GROUND STOREY WINDOW SCHEDULE		GROUND STOREY WINDOW SCHEDULE	
NUMBER ON PLAN	W1	NUMBER ON PLAN	W2	NUMBER ON PLAN	W3
QUANTITY	1	QUANTITY	1	QUANTITY	3
TYPE	Purpose made aluminium door with 2x fixed side panel. All glazing to be Single obscured glazing acc. to fenestration elements elsewhere and acc. to SANS 10400 AAAMSA and SANS 204 standards	TYPE	Purpose made aluminium door with fixed side panel. All glazing to be Single obscured glazing acc. to fenestration elements elsewhere and acc. to SANS 10400 AAAMSA and SANS 204 standards	TYPE	Standard pt159 aluminium window, 1x opening up section and 2x fixed panel. All glazing to be Single obscured glazing acc. to fenestration elements elsewhere and acc. to SANS 10400 AAAMSA and SANS 204 standards
FINISH	Powder coated, colour Bronze	FINISH	Powder coated, colour Bronze	FINISH	Powder coated, colour Bronze
IRONMONGERY	as per manufacturer	IRONMONGERY	as per manufacturer	IRONMONGERY	as per manufacturer
LOCATION	Reception	LOCATION	Reception	LOCATION	Storage room
SILL	none	SILL	none	SILL	Painted brick-on-edge sill
LINTEL	none	LINTEL	2 x concrete lintels above	LINTEL	2 x concrete lintels above

NOTES

All dimensions on the drawings must be verified against the existing site conditions before the commencement of any work.  
 Drawings may not be scaled.  
 The vertical dimensions of brickwork are based on multiple centre lines of 85mm and the contractor must set out brickwork accordingly.  
 The contractor is responsible for site inspections by the building inspectors of the local authorities.  
 Except where otherwise indicated all given levels are unfinished levels.  
 The copyright of this drawing vests in the architect unless otherwise indicated.  
 All work must be done according to the South African Bureau of Standards code of practice SANS 10400-2010.

NO.	REVISION	DATE	APPROVED



ARCHITECTS EST 1952  
 ARCHITECTURE, URBAN DESIGN, URBAN PLANNING, INTERIOR DESIGN  
 ENVIRONMENTAL MANAGEMENT & HERITAGE CONSULTING  
 7 RAY CHAMPION AVENUE, LILYVALE, BLOEMFONTEIN, 9301  
 PO BOX 28278, DANHOOF, 9310  
 TEL: 051 406 2100, FAX: 051 406 2101  
 info@roodtarchitects.co.za, www.roodtarchitects.co.za

PAN CYPRIOT CC. CLIENT

RECORD DRAWINGS OF ALL BUILDINGS ON ERF 1/266, PRES. STEYN STREET 51, WESTDENE BLOEMFONTEIN PROJECT

GROUND FLOOR PLAN, ELEVATIONS, FIRE LAYOUT & WINDOW AND DOOR SCHEDULE DRAWING

DESIGN	DATE
N/A	
DRAWN	DATE
BF	25/01/2018
APPROVED	DATE
SCALE	ISSUED
1:100	12/02/2018
DRAWING STATUS	DRAWING NO.
RECORD DRAWINGS	1074_6/W1/04